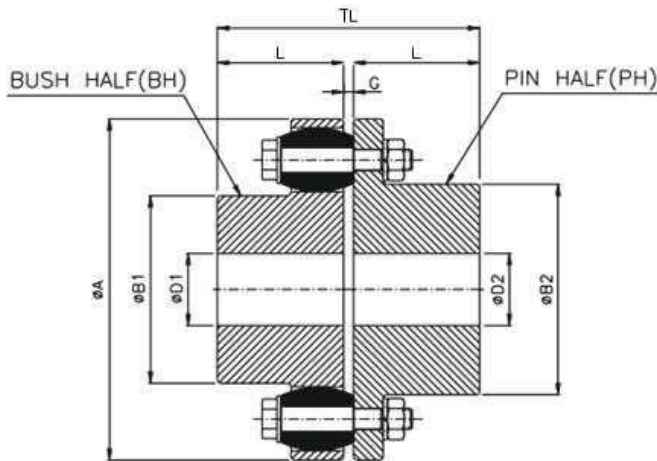
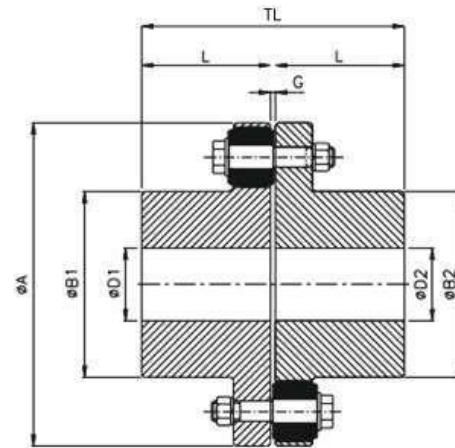


PINBUSH COUPLINGS

ERB- SERIES



UPTO SIZE ERB 360



FROM SIZE ERB 400 ONWARDS

Engineering Data and Dimensions

Coupling Size	No. of pins	Coupling Rating @ 100 RPM						Max. Speed rpm	Min. Bore	Max. Bore		ϕA	$\phi B1$	$\phi B2$	G	L	TL	Wt, in Kg	M.I (WR ²) in Kgm ²	Max. Misalignment		
		Synthetic Rubber		Polyurethane		HTrans				$\phi D1$	$\phi D2$									Axial (mm)	Radial (mm)	Angular
		KW at 100 RPM	Torque Nm	KW at 100 RPM	Torque Nm	KW at 100 RPM	Torque Nm															
ERB- 105	3	1	95	1.5	143	2.5	239	7200	11	30	32	105	48	50	2-6	45	94	2	0.003	2	0.3	1°
ERB- 116	4	1.5	143	2.3	215	3.8	358	6100	12	39	42	116	60	68	2-6	45	94	2.6	0.005	2	0.3	1°
ERB- 125	4	1.7	162	2.6	244	4.3	406	5500	14	45	50	125	68	78	2-6	50	104	3.1	0.007	2	0.4	1°
ERB- 144	6	3.3	315	5	473	8.3	788	4900	18	50	60	144	82	91	2-6	55	114	4.3	0.012	2	0.4	1°
ERB- 162	6	5.5	525	8.3	788	14	1313	4500	22	60	65	162	89	100	2-6	60	124	7.5	0.03	2	0.4	1°
ERB- 178	6	6.7	640	10	960	17	1600	3800	24	70	75	178	105	115	2-6	70	144	10	0.04	2	0.5	1°
ERB- 198	10	13	1241	20	1862	33	3104	3400	28	80	90	198	124	135	2-6	80	164	13	0.062	2	0.5	1°
ERB- 228	11	21	2005	32	3008	53	5013	3000	28	90	100	228	133	146	4-10	90	187	18	0.1	3	0.6	1°
ERB- 252	12	32	3056	48	4584	80	7639	2700	38	105	115	252	156	167	4-10	100	207	24	0.17	3	0.6	1°
ERB- 285	11	48	4585	72	6875	120	11459	2400	48	115	125	285	170	186	4-10	110	227	35	0.31	3	0.7	1°
ERB- 320	12	64	6112	96	9167	160	15279	2100	55	125	135	320	196	212	4-10	125	257	51	0.53	3	0.7	1°
ERB- 360	11	93	8881	140	13321	233	22202	1900	65	135	150	360	212	232	4-12	140	288	73	1.02	4	0.9	1°
ERB- 400	10	126	12032	189	18048	315	30080	1700	75	160	170	410	230	250	4-12	160	328	101	1.7	4	1.1	1°
ERB- 450	12	195	18621	293	27932	488	46553	1500	85	180	190	450	260	280	4-12	180	368	137	2.9	4	1.1	0.5°
ERB- 500	14	270	25783	405	38675	675	64458	1350	95	200	210	500	290	310	4-12	200	408	180	4.7	4	1.1	0.4°
ERB- 560	10	325	31035	488	46553	813	77588	1200	95	225	235	560	320	340	4-8	220	446	278	10.7	2	1.5	0.3°
ERB- 630	12	440	42017	660	63025	1100	105042	1050	100	250	260	630	355	375	4-8	240	486	365	17.4	2	1.5	0.3°
ERB- 710	12	785	74962	1178	112443	1963	187405	950	100	260	270	710	385	405	5-9	260	527	516	33	2	1.8	0.3°
ERB- 800	14	1047	99981	1571	149972	2618	249953	850	100	280	290	800	420	440	5-9	290	587	691	53	2	1.8	0.3°
ERB- 900	16	1623	154985	2435	232478	4058	387463	750	100	305	315	900	465	485	5-9	320	647	927	86	2	1.8	0.3°
ERB- 1000	18	2042	194997	3063	292495	5105	487492	680	125	320	330	1000	515	535	5-10	350	708	1224	142.8	2	2	0.1°